

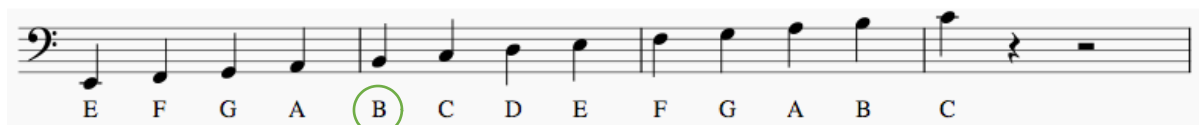
## Bass Players: Why is bass clef different from treble clef?

As a bass player, you may have noticed that when you read music, the notes appear to be in different places on the staff compared to other instruments such as guitar, violin and flute.

Here are the notes you will find on treble clef:



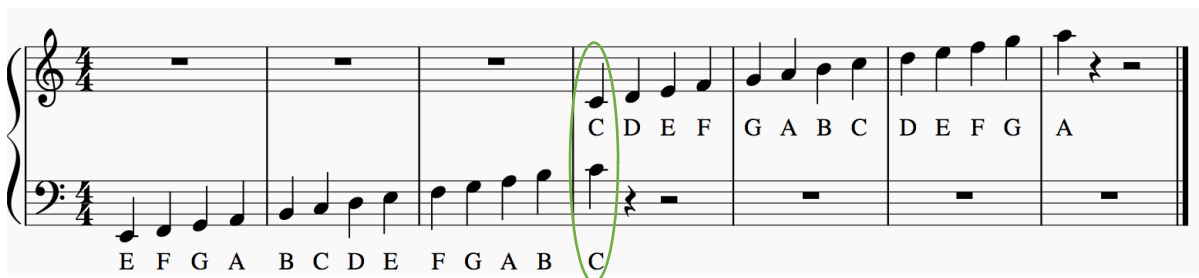
And here are the bass clef notes:



As you can see, the notes appear to be completely different on the bass clef. The note on the second line of the treble clef is a G, but the second line of the bass clef is a B (circled in green).

Why is this?

The treble and bass clefs are actually connected. This is easy for piano players to see as they use a grand staff, which displays both of the clefs together. When the bass clef ends, the treble clef begins.



Here is the grand staff. As you can see, the bass clef starts first (with the lowest notes), and when it finishes, the treble clef begins. This crossover note is known as middle C (circled in green).

On a bass guitar, this final C note can be found on fret 5 of the G string.

On a guitar, this beginning C note on the treble clef will be the 3<sup>rd</sup> fret of the A string. They will both make the same note.

Bass instruments play much lower notes than a treble clef instrument, which is why a new clef was needed to display those extra notes.